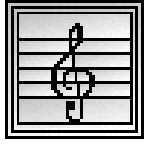


The Putnam Chorale



Putnam Chorale Ltd., P.O. Box 982, Carmel, New York 10512
www.putnamchorale.org

Musical Director
DOUGLAS ANDERSON

Board of Directors
BETH MALEY
President
NICK SIMONELLI
Vice President
JANE FREEMAN
Secretary
MARY ROGERS
Corresponding Secretary
LONNIE POWERS
Treasurer
JOHN LIMARZI
Publicity

ALMA BARIDON
LARS FINGER
IRENE MULLER
GAIL SCHAUB
ELAINE WINTER
JENNY ZAND

Webmaster
IRENE ALCOFORADO

Honorary Member
LILLIAN EBERHARDT

The Putnam Chorale will be pleased to perform *George Frideric Handel's SAMSON*, an Oratorio in three acts, Sunday April 29, 2012 at 3:00 pm at Temple Beth Elohim, 31 Mount Ebo Road North in Brewster, NY.

Samson is a three-act oratorio by George Frideric Handel, considered one of his finest dramatic works. It is usually performed as an oratorio in concert form, but on occasions has also been staged as an opera. The well-known arias "Let the bright Seraphim" (for soprano) and "Total eclipse" (for tenor) are often performed separately in concert.

Handel began its composition immediately after completing *Messiah* on 14 September 1741. It uses a libretto by Newburgh Hamilton, who based it on Milton's Samson Agonistes, which in turn was based on the figure Samson in Chapter 16 of the Book of Judges. The story traces Samson's slavery by the Philistines after betrayal by Delilah, his imprisonment, and his ultimate triumph as he destroys the Temple of Dagon.

The premiere was given at Covent Garden in London on 18 February 1743. The oratorio was a great success, leading to a total of seven performances in its first season, the most in a single season of any of his oratorios. *Samson* retained its popularity throughout Handel's lifetime and has never fallen entirely out of favor since.

You can find more information on our website, www.putnamchorale.org, or by telephone at 845-279-7265.

The Putnam Chorale provides quality choral music experiences to participants and audiences in Putnam County, New York. Our singers come from every town in Putnam County, as well as nearby Westchester, Dutchess and Fairfield Counties. Adult singers of any experience level are welcome to join. There are no auditions.

The Putnam Chorale performs music from classical to contemporary styles in Putnam County throughout the year. The Putnam Chorale Ensemble, an outreach group, brings music to area nursing homes and performs at community events.

Funding for the Chorale is provided through modest participant dues, corporate and NYSCA grants, fundraising activities, advertising, and donations. The Chorale is a non-profit, 501c3 organization.

The Putnam Chorale also hires and provides an opportunity for local professional instrumentalists and vocal soloists to perform with the group.

DONATIONS ARE FULLY TAX DEDUCTIBLE AND WE WELCOME CORPORATE SPONSORSHIP.

MISSION STATEMENT: *To provide the community with the experience of enjoying well performed classical and popular choral music and to provide an opportunity for area residents to learn the techniques of choral singing and attain the skill and discipline of concert performance; to provide this entertainment on an outreach basis via nursing homes, libraries, or community events throughout the area.*